

Sentinel Node Protocol

Southern Cross Pathology

Monash Medical Centre



Alex Laslowski

March 2006

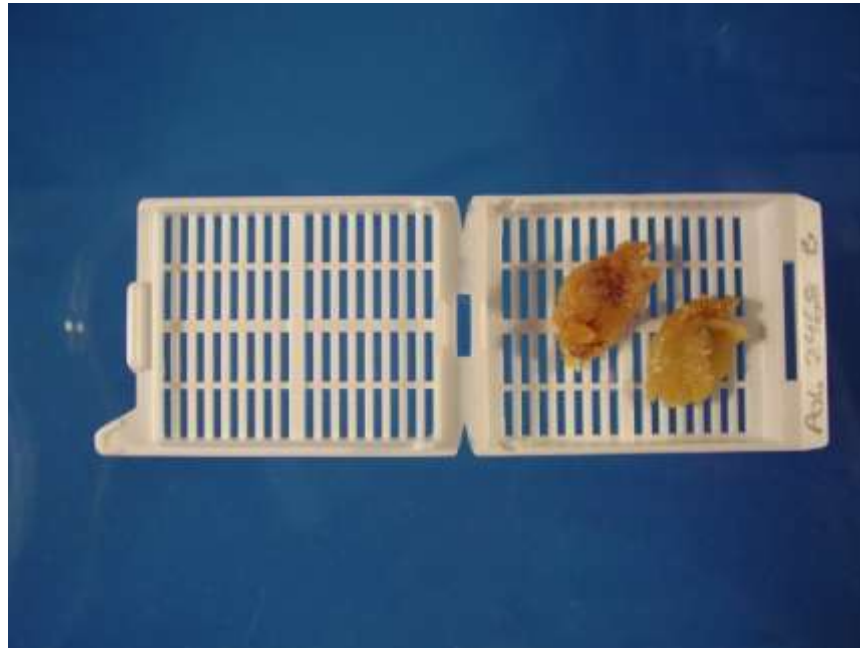
Introduction

- Our laboratory performs the pathology for a number of Southern health and breast screen locations.



Cut-up

- The standard protocol involves bisecting the sentinel node and placing the two cut surfaces face down.



Sectioning

- One section is routinely cut and stained with a H&E stain.



Immunoperoxidase

- The pathologist may decide to order immunoperoxidase stains.

Immunoperoxidase

- The pathologist may decide to order immunoperoxidase stains.
- The protocol for this involves staining the sections with LMCK (CK8) at three different levels.

Immunoperoxidase method

- Section are cut the previous day and left to dry overnight at room temperature.



Immunoperoxidase method

- Antigen retrieval is achieved via heat/pressure using a decloaking chamber.



The Antibody

- Novacastra CK8. Clone NCL-L-CK8-TS1



The Antibody

- Novacastra CK8. Clone NCL-L-CK8-TS1

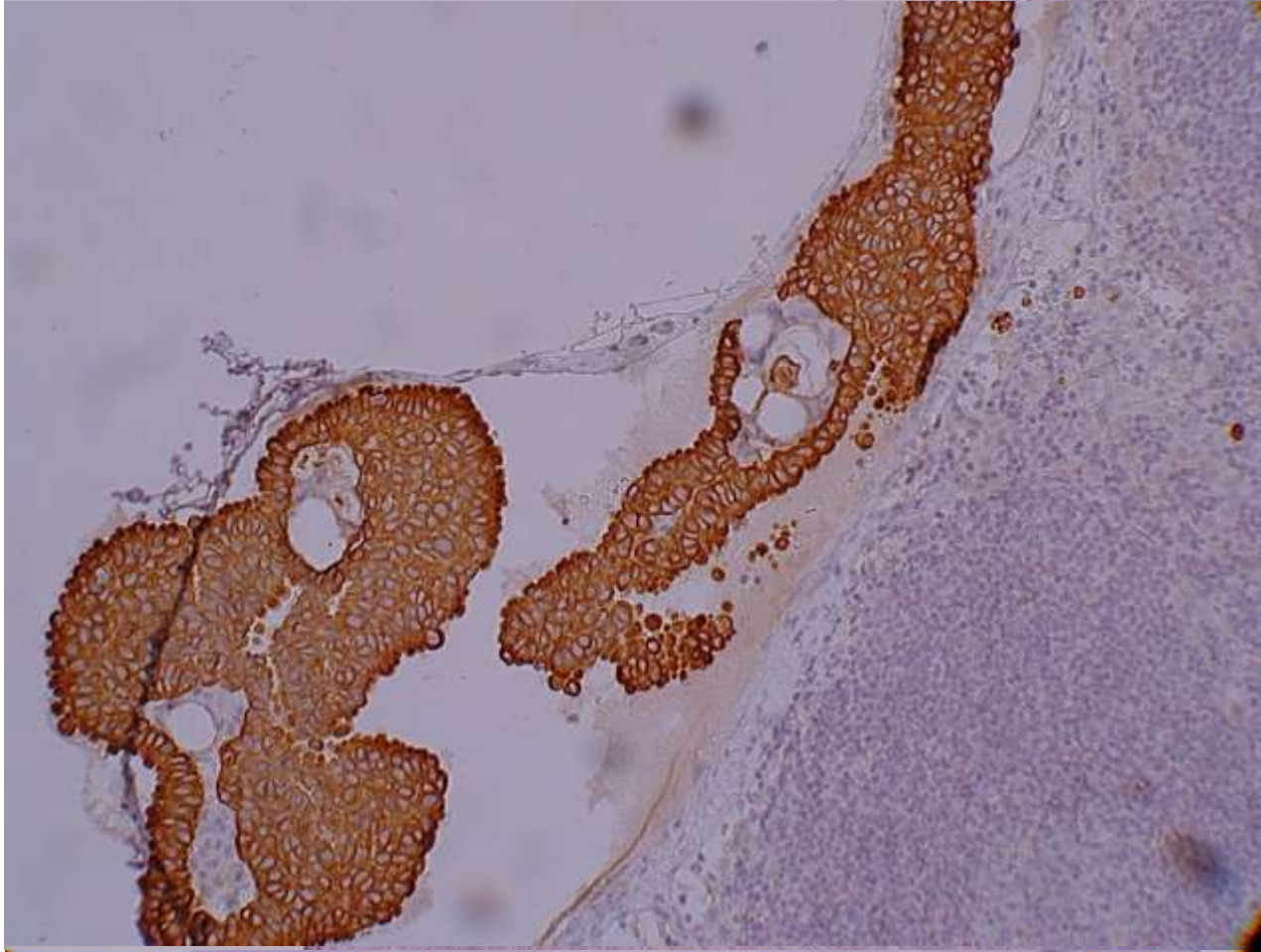


- Dilution 1:200

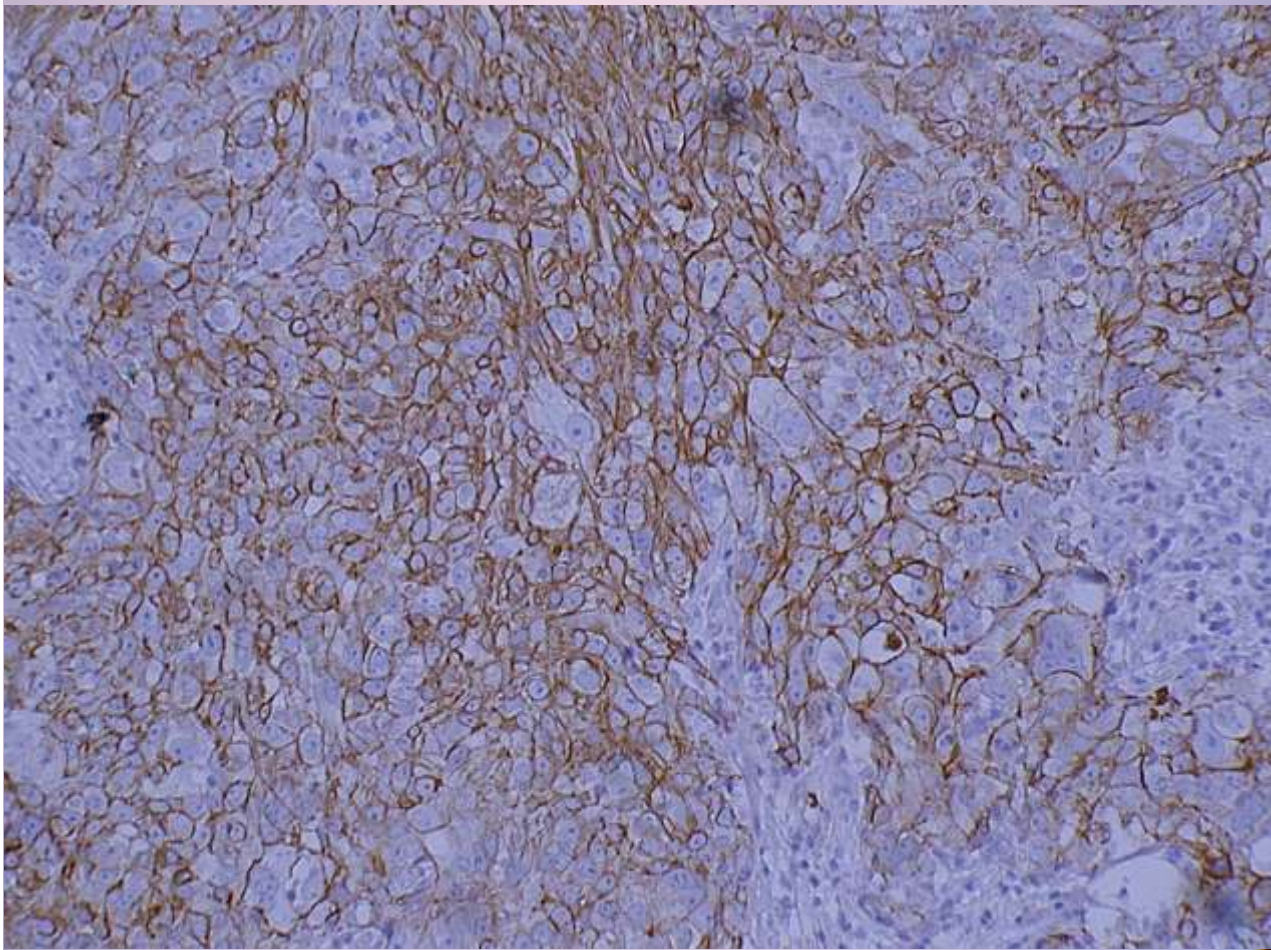
Detection Kit



Microinvasion



Obvious Invasion



References

Novacastra Date Sheet – Cytokeratin 8
NCL-L-CK8-TS1

